



## HOW TO MAKE A HANGING SLEEVE

How to make a quilt sleeve A B C These directions were produced by Susan Brubaker Knapp. They are free, and may be copied and distributed. E-MAIL: susan@bluemoonriver.com

WEB SITE: [www.bluemoonriver.com](http://www.bluemoonriver.com) n BLOG: [wwwbluemoonriver.blogspot.com](http://wwwbluemoonriver.blogspot.com)

**N**early all quilt shows require a 4" hanging sleeve for quilts exhibited. This 4" size accommodates most hanging rods or slats used at shows.

Here are some basic directions.

**1** Measure the top edge of your quilt, where the sleeve will go, about  $\frac{1}{2}$ " from the top. In this example, the quilt measures 13". **See photo A.**

**2** Cut a strip that is 9" wide and the width of your quilt plus 1" (for the quilt shown here, this is a rectangle 9" x 14").

**3** Fold in the short ends  $\frac{1}{2}$ " and press. Fold in again  $\frac{1}{2}$ " and press. This eliminates the raw edge. **See photo B.**

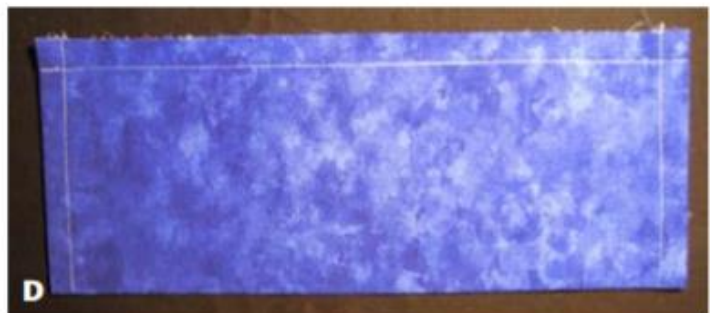
**4** Sew a seam along these short ends. **See photo C.**

**5** Fold the strip in half with the wrong sides together, and press.

**NOTE:** By using this method, you do not have to turn the tube inside out after you sew it together. If you have a wide quilt, and a long sleeve tube, it can be difficult to turn it right side out. This way, the seam is hidden between the sleeve and the quilt backing.

**6** Stitch a  $\frac{1}{2}$ " seam along the long edge. **See photo D.**

(Continued)

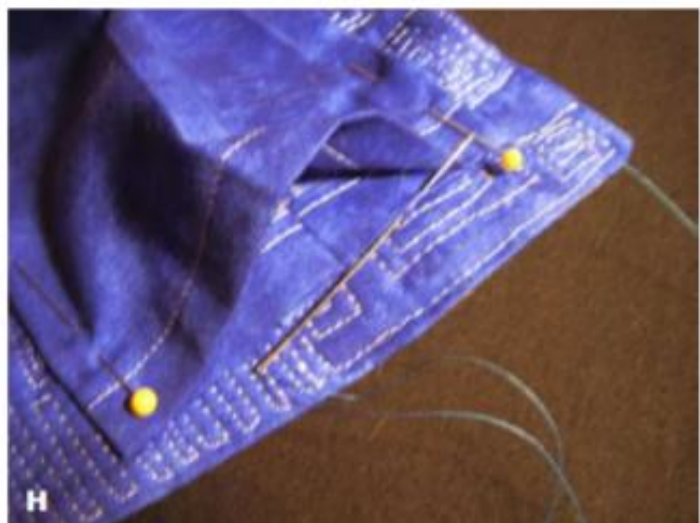
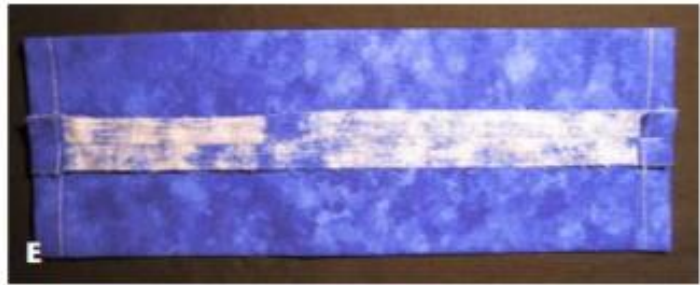


**7** Press the seam open, center it, and press. See photo E.

**8** Along one of the long edges, fold down and press about  $\frac{1}{4}$ ". See photo F. This allows for a little slack so the quilt will hang better on a rod or slat. Without this slack on the back, you may have a bulge on the front of the quilt where the hanging rod goes through. You can see this slack more clearly on the side view (photo G).

**9** Pin the sleeve to the back of the quilt, about  $\frac{1}{2}$ " from the top. See photo G. Take care to place the sleeve low enough that it will not show from the front once the rod is inside and the weight of the quilt pulls the sleeve up toward the top of the quilt. This is even more of an issue if the quilt is uneven at the top, such as the example shown here.

**10** Hand-stitch the sleeve to the quilt. See photo H. Go around all four edges, even the short sides. Your stitches should only go through the backing and the batting. You should not see them on the front of the quilt.



Check out this YouTube video by Fons & Porter

[https://www.youtube.com/watch?v=7NO70\\_ENjQk](https://www.youtube.com/watch?v=7NO70_ENjQk)

